

## DISTANCE MEASURING

contactless and reliable

Accuracy 1 mm

Measuring range 50 m / 150 m / 500 m

Measuring rate 250 Hz

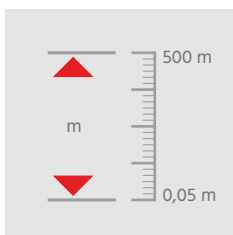
# Highest measuring performance for uncompromising results

Highlights of the Dimetix Laser Distance Sensors are precision, robustness, flexibility and speed. Our Laser Distance Sensors measure over the complete measuring range with an **accuracy** of 1 mm and with a repeatability of 0.3 mm. The **measuring range** is between 0 and 500 meters. The devices work with a **measuring rate** up to 250 Hz and have an output rate up to 1 kHz.

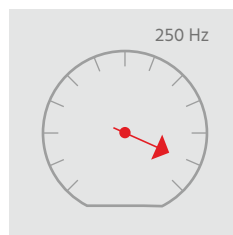
Due to many years of innovations and continuous development, Dimetix Laser Distance Sensors work under arduous external conditions. It is possible to even measure on **black surfaces with solar irradiation**. Extreme working **temperatures** from -40 up to +60 °C and a **robust housing** help them withstand the hardest environments.

The Dimetix Laser Distance Sensors are equipped with a multitude of serial interfaces as standard. Besides synchronous and asynchronous **interfaces**, PROFINET, EtherNet/IP, EtherCAT and PROFIBUS are also available.

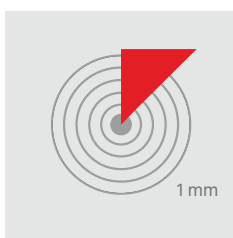
An **analog 0/4 ... 20 mA output** and digital **in- and outputs** are standard. While the serial interfaces as well as further features can be configured by the customer.



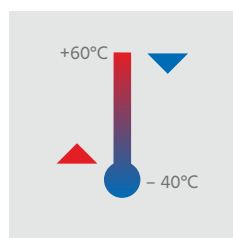
Measuring range



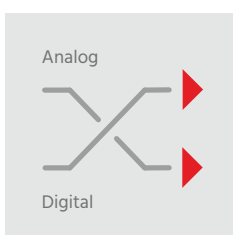
Measuring rate



Accuracy



Temperature



Interfaces



Degree of protection